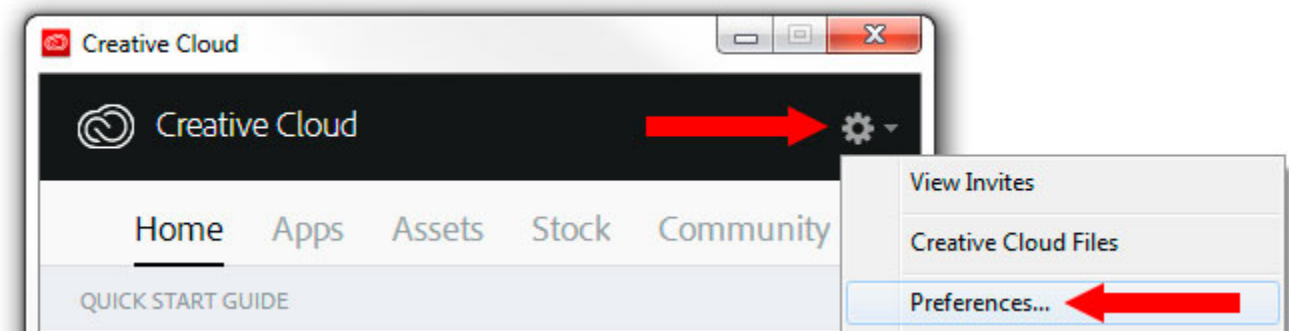


Things to do before installing extension panels from the Adobe AddOns website.

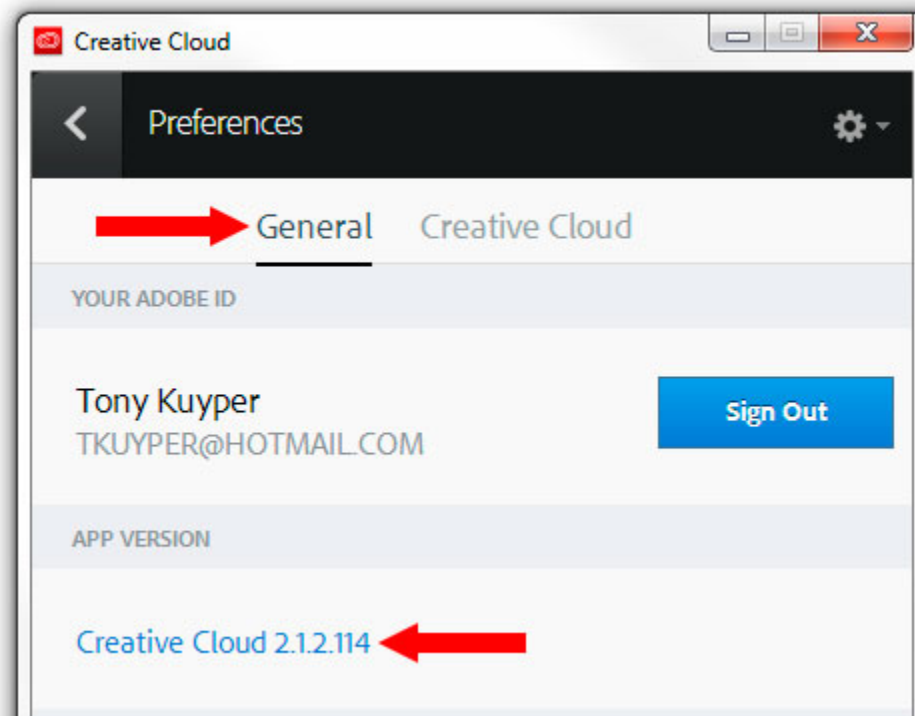
1. Make sure the Creative Cloud desktop application is up-to-date
2. Make sure file-synching is turned on.
3. Make sure ALL Adobe applications are closed on the computer.

1. Make sure the Creative Cloud desktop application is up-to-date (Version 2.2.0.129 was released on 27 July 2015).

First, check your current Creative Cloud desktop application version. Click on the gear icon in the upper right of the Creative Cloud desktop application window and select "Preferences...".



The version number is found in the "APP VERSION" section of the "General" tab. Clicking on the version number opens the following webpage where you can compare your version number with latest version released by the Adobe:
<https://helpx.adobe.com/creative-cloud/release-note/cc-release-notes.html>

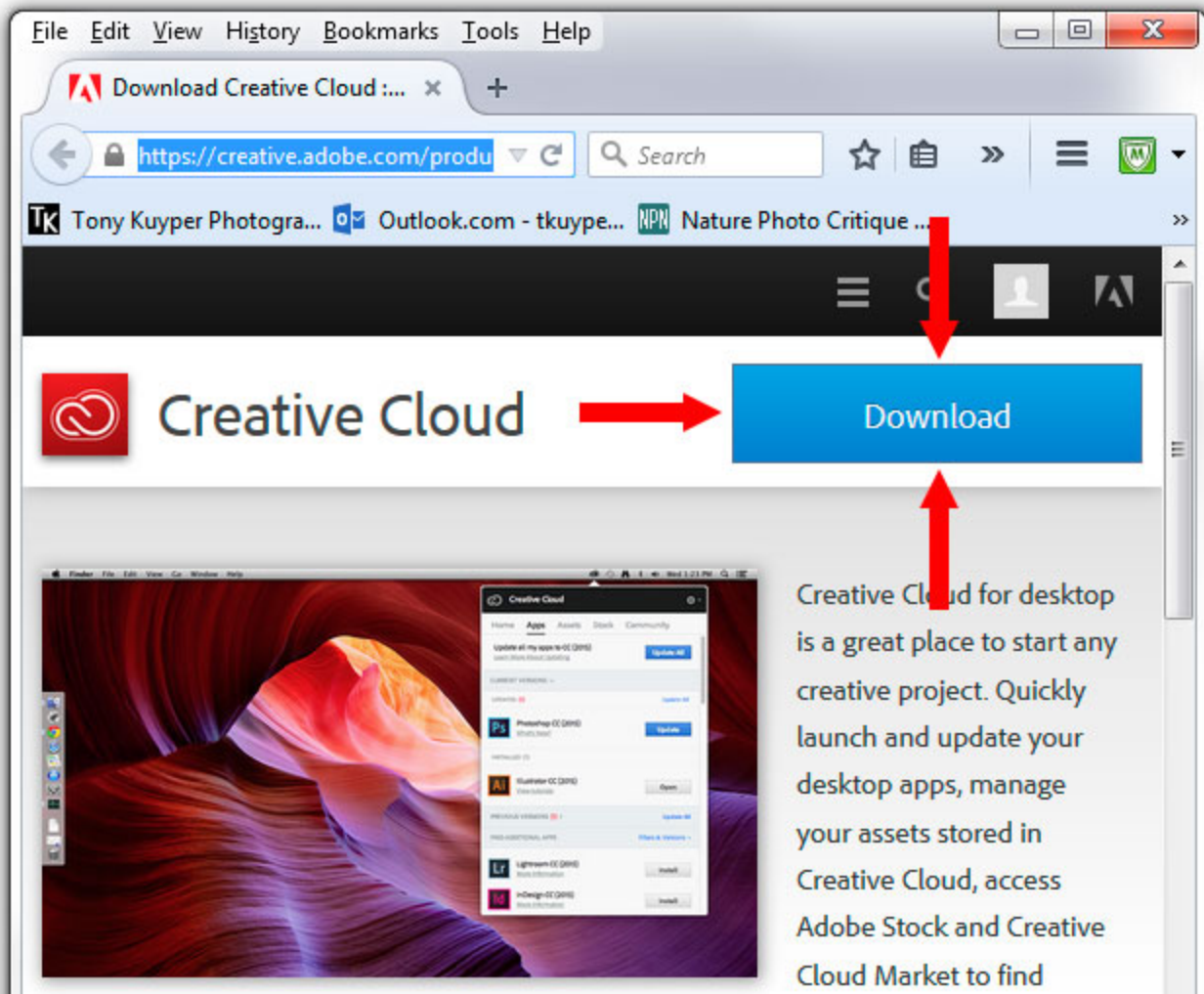


If your version is older than that listed on the Adobe website, update your Creative Cloud desktop application as follows:

- a) Close all Adobe applications except the Creative Cloud desktop application.
- b) Sign out of the Creative Cloud desktop application using the "Sign Out" button shown above.
- c) Sign back in to the Creative Cloud desktop application using the "Sign In" button when it reappears. This is usually all that's necessary to start the update process.

If the sign out/sign in cycle does not update the Creative Cloud desktop application, use the alternate method below.

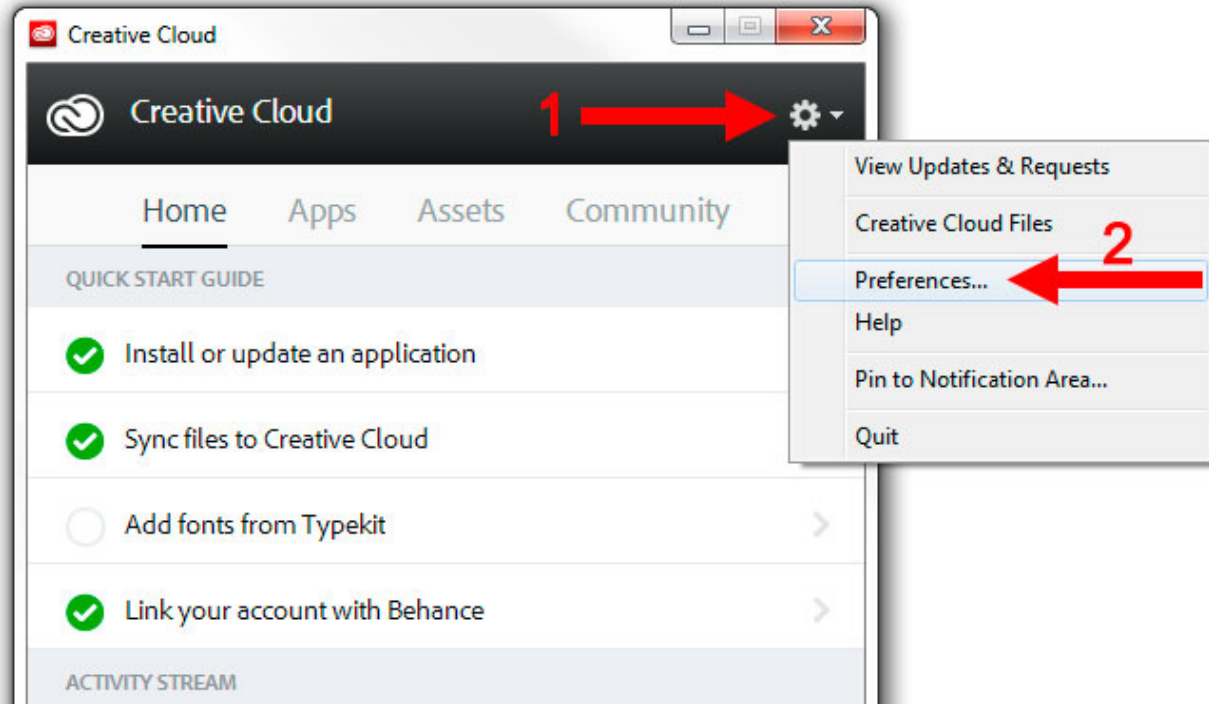
- a) Close all Adobe applications except the Creative Cloud desktop application.
- b) Sign out of the Creative Cloud desktop application using the "Sign Out" button shown above.
- c) Visit the download center: <https://creative.adobe.com/products/creative-cloud> (image below).
- d) Click the download button on the website to download and install the latest version of the Creative Cloud desktop application on your computer. It is usually not necessary to uninstall the previous version. The new version installs over top the old version.
- e) Sign back into the Creative Cloud desktop application when asked to do so.



2. Make sure file-synching is turned on. Here's how.

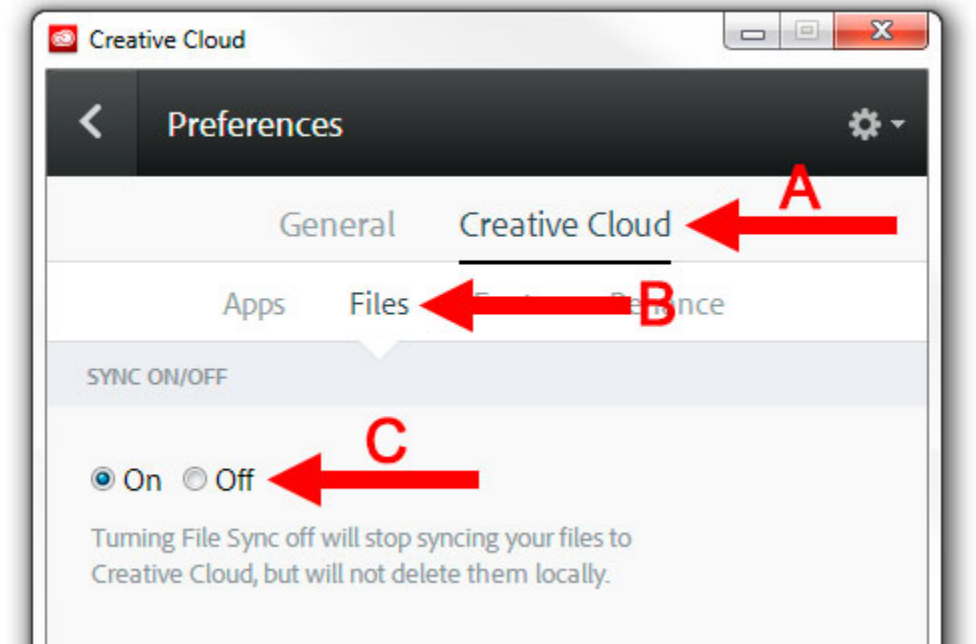
Open the Creative Cloud desktop application.

Click the gear icon (Number 1, image at right) and select "Preferences..." from the fly-out menu (Number 2, image at right).



In the Preferences window:

A) first click "Creative Cloud" (A, image at right),
B) then "Files" (B, image at right),
C) then the "On" radio button (C, image at right).



3. Make sure ALL Adobe applications are closed on the computer.
Installation of extension panels might not occur if Adobe applications are open.

After the extension is installed, the activity stream in the "Home" tab of the Creative Cloud desktop app shows that installation occurred (image below). Once that happens, reopen Photoshop and click through the Photoshop menu command Window > Extensions to find installed extension panels.

