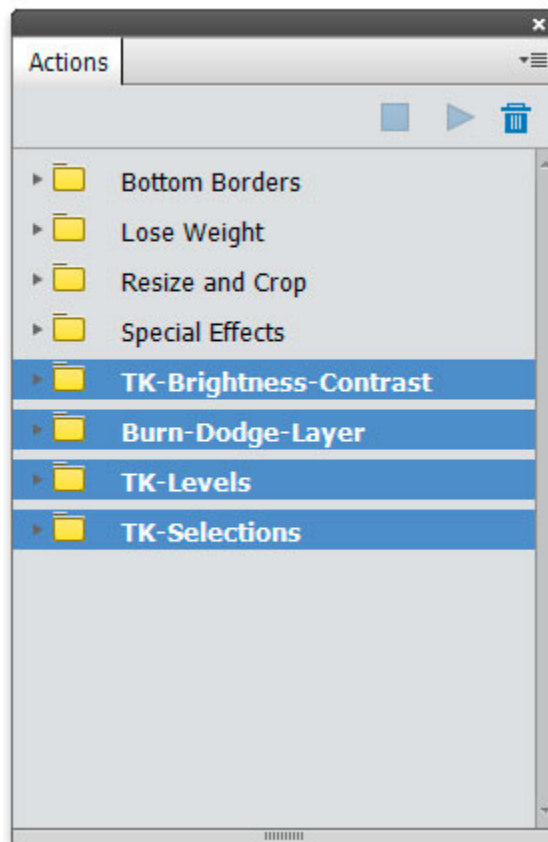


Using TK-Actions in Photoshop Elements



©Tony Kuyper, 2014
All rights reserved

Introduction

The action sets in the download were recorded in the full version of Photoshop specifically to work in Photoshop Elements. The following URL has more information about luminosity masks and how they are created. It also has a review of layers, selections, and masks to provide a better understanding of how luminosity masks and luminosity selections work.

Luminosity Masks:

<http://www.goodlight.us/writing/luminositymasks/luminositymasks-1.html>

Important Information

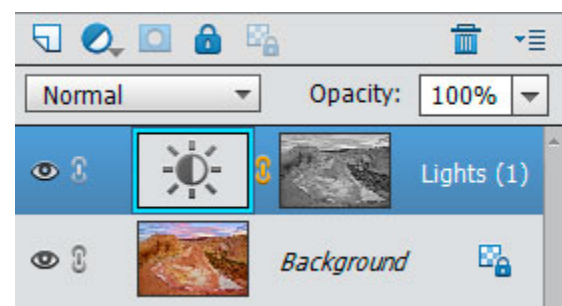
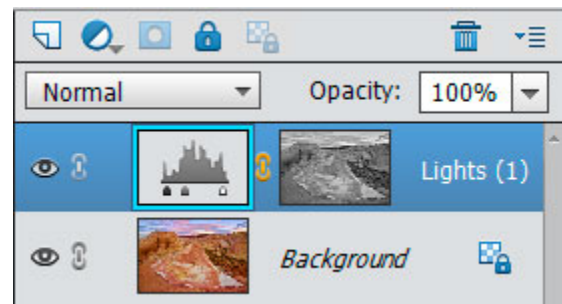
The actions were recorded for Photoshop Elements 12 and should work in subsequent versions. I have received word that they also work in PS Elements 11, except for the "All Lights," "All Darks," and "All Midtones" actions.

Action Sets

There are four different actions sets:

TK-Levels—This set of actions creates a Levels adjustment layer on the Layers panel with the designated luminosity mask in place as the layer mask. The luminosity layer mask filters the Levels adjustment so that lighter tones in the mask receive more adjustment and darker tones receive less.

TK-Brightness-Contrast—This set of actions creates a Brightness/Contrast adjustment layer on the Layers panel with the designated luminosity mask in place as the layer mask. The luminosity layer mask filters the Brightness/Contrast adjustment so that lighter tones in the mask receive more adjustment and darker tones less.



TK-Selections—This set of actions creates an active luminosity selection of the desired luminosity mask. For example, if you play the "Light Lights (2)" action, it will create the "Light Lights (2)" selection and the marching ants will show on the screen enclosing pixels that are at least 50% selected.

(NOTE: Some selections will not have any marching ants because no pixels are at least 50% selected. However, there will still be an active selection even though no marching ants are visible.)

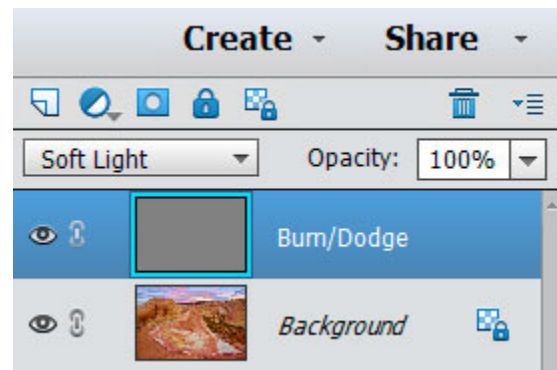


Active luminosity selections are often used with the Brush Tool. When painting with the Brush Tool through an active luminosity selection, the selection controls which pixels receive paint and how much. It helps to turn off the marching ants when painting by pressing Ctrl+H (Mac: Command+H) or by using the View > Selection menu command, which toggles the ants on and off. It's easier to see what is being painted when the marching ants aren't in the way. *(NOTE: Turning off the marching ants is NOT the same as the turning off the selection. There is still an active selection to paint through after turning off the marching ants. To completely turn off the selection use Ctrl+D (Mac: Command+D) or the menu command Select > Deselect.)* The Luminosity Painting tutorial will walk you through the process of burning and dodging through luminosity masks.

Luminosity Painting:

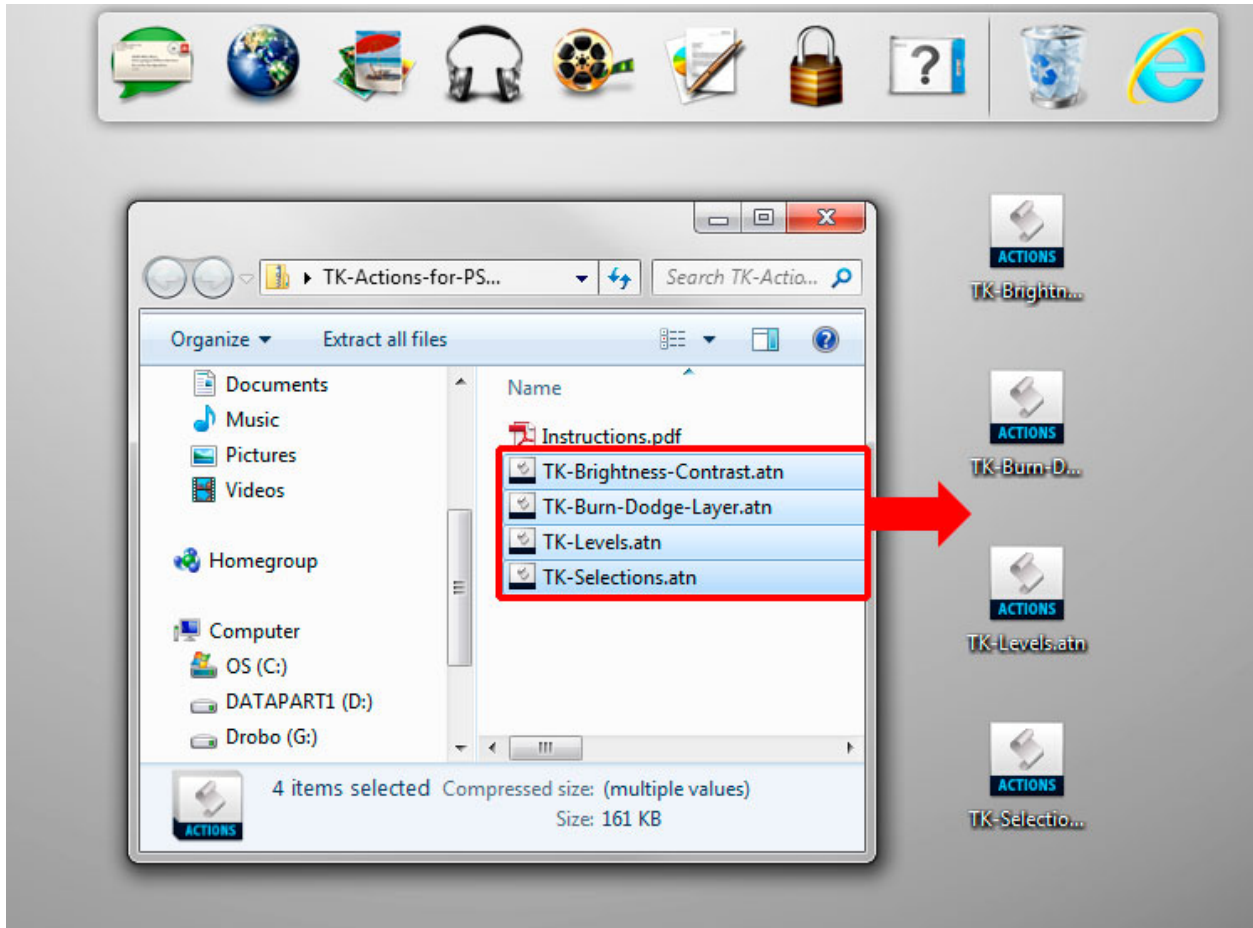
<http://www.goodlight.us/writing/luminositypainting/luminositypainting-1.html>

Burn/Dodge Layer—This set has just one action to create the Burn/Dodge layer that is used with luminosity painting. The usual procedure is to FIRST create the Burn/Dodge layer using this action, and then use one of the TK-Selections actions to create a luminosity selection to paint through.

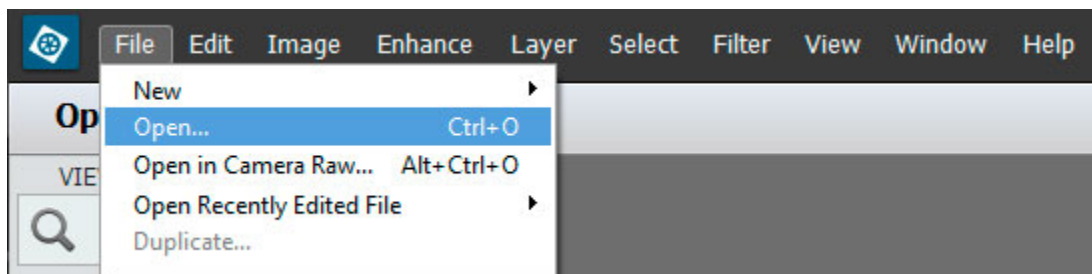


Installation (Method #1) *Note: see Method #2 on Page 6 if method #1 doesn't work. Mac users especially may need to use Method #2.*

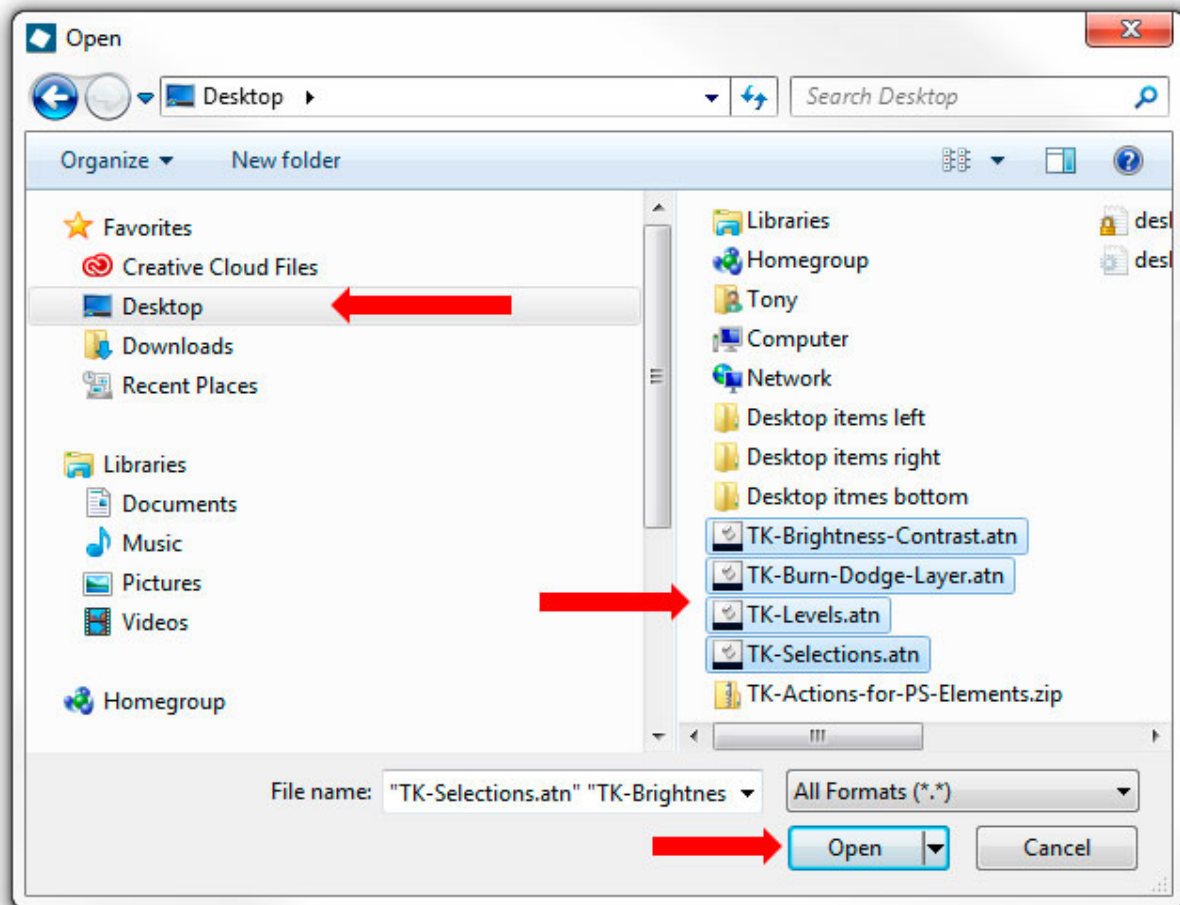
1. From the download, copy the four action sets to the desktop.



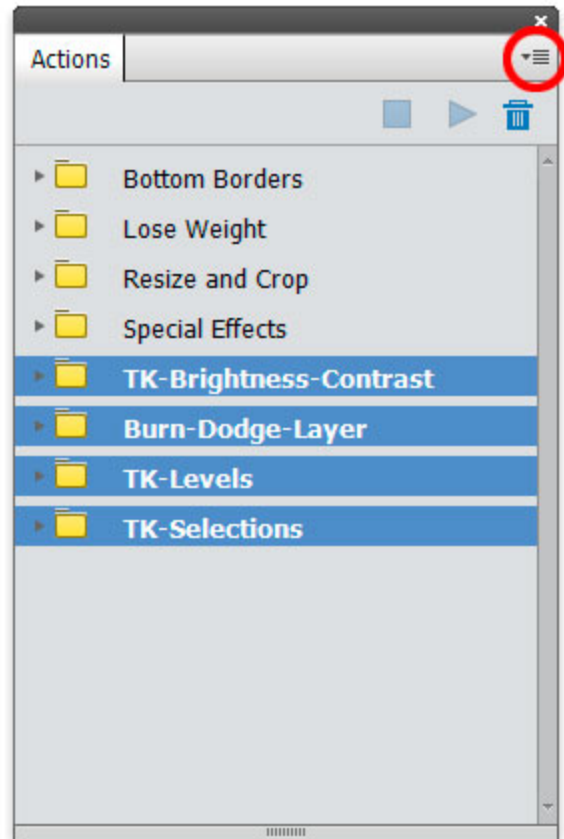
2. Open Photoshop Elements.
3. Click on File > Open... in the main menu.



4. Navigate to the Desktop where the action set files were copied. Select all of them and click the "Open" button. Photoshop Elements then installs the action sets onto its Actions panel.



5. To see the installed action sets, click Window > Actions from the menu to open the Actions panel. Make sure all four action sets installed. If any are missing, repeat the procedure choosing just the missing action set(s) to "open".



Installation (Method #2)

1. From the download, copy the four action sets to the desktop.
2. Open Photoshop Elements.
3. Use the menu command Window > Actions to open the Actions panel.
4. Click on the fly-out menu in the upper right of the panel (red circle, image above)
5. Select "Load Actions" from the fly-out menu.
6. In the dialog box that opens, navigate to the desktop. Select one of the action sets by clicking it with the mouse. Then click the "Load" button to add it to the Actions panel.
7. Repeat for steps 4-6 until all the action sets are loaded on to the Actions panel as shown in the image above.

Using the actions

Actions can only be used in the "Expert" mode in Photoshop Elements. They are not available in "Quick" or "Guided" modes. There are three steps to playing an action:

1. On the Actions panel, open the action set by clicking the arrow to the left of the folder icon.
2. Click on the name of an action
3. Click the arrow at the top of the Actions panel to run the action.

Once an action runs, it is still up to the user to decide what to do with the results. A Levels adjustment on the Adjustment panel would be the usual next step after using one of the TK-Levels actions. A Brightness/Contrast adjustment would be the next step after using the TK-Brightness-Contrast actions. Luminosity painting would be a possible option after using one of the TK-Selections actions.

